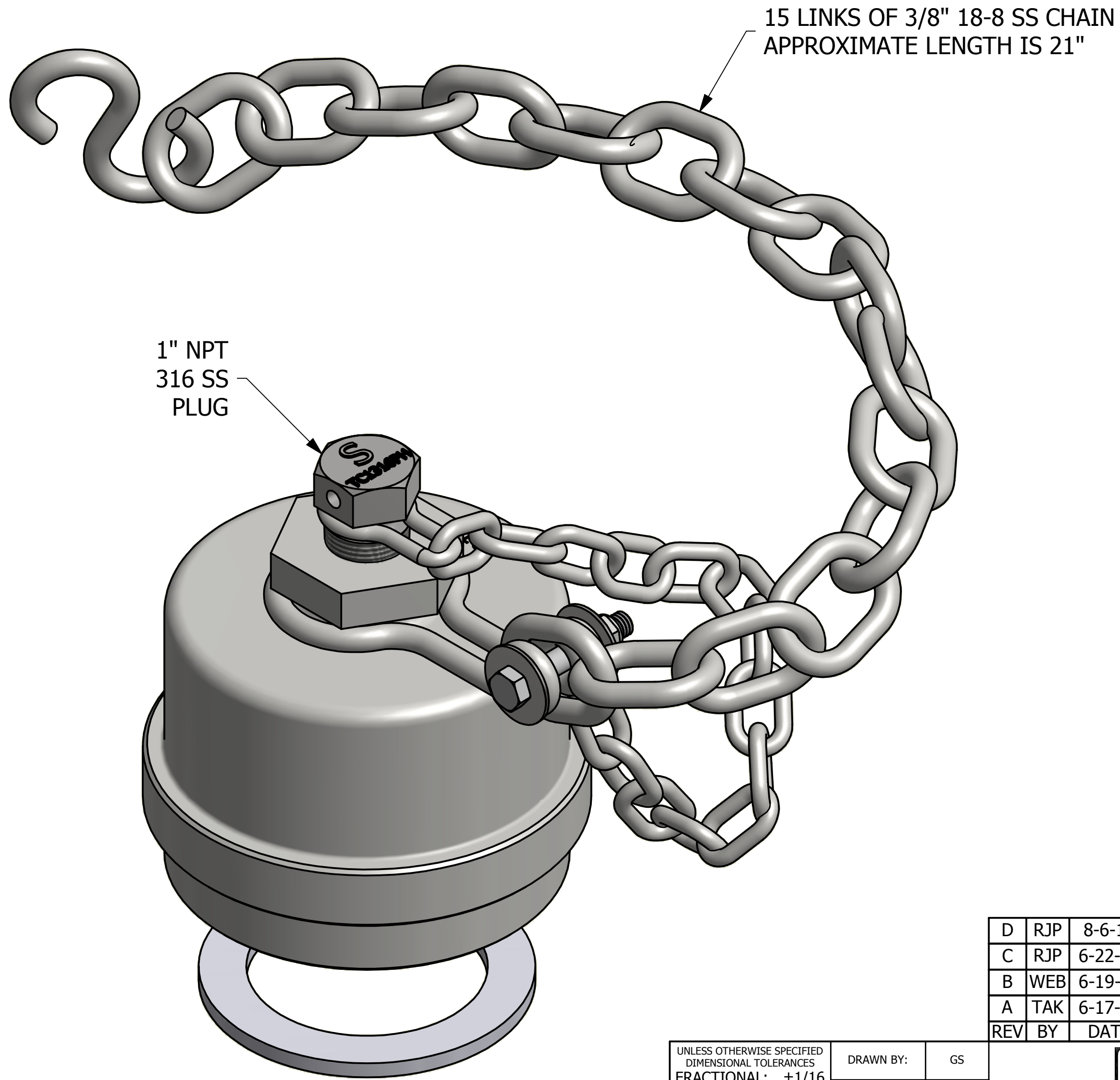


NOTES:

1. THIS ASSEMBLY IS AAR AND DOT APPROVED.
2. THREADS ARE 5 1/4"-4 UN-2B.
3. AAR APPROVAL # E-149523.
4. GASKET MATERIAL IS WHITE FDA NITRILE.



SALES DRAWING

SALES DRAWING

REV	BY	DATE	DESCRIPTION
D	RJP	8-6-15	UPDATED TE4S416DC GEOMETRY
C	RJP	6-22-15	TC1316PAH WAS TC1416PAH
B	WEB	6-19-15	ADDED NOTES, UPDATED TITLEBLOCK
A	TAK	6-17-13	CHANGED REQUIRED SC80 FROM 9 TO 16

UNLESS OTHERWISE SPECIFIED DIMENSIONAL TOLERANCES FRACTIONAL: $\pm 1/16$ X.XX: $\pm .03$ X.XXX: $\pm .015$ ANGLE: $\pm 1^\circ$ DEBURR ALL SHARP EDGES. ALL MACHINED SURFACES TO HAVE A 125 RMS FINISH UNLESS NOTED OTHERWISE. THIRD ANGLE PROJECTION	DRAWN BY:	GS
	CHECKED BY:	TAJ
	PROTOTYPE BY:	GS
	PROTOTYPE DATE:	3/26/2009
	APPROVED FOR PRODUCTION BY:	CHL
	PRODUCTION DATE:	8/11/2009

<b>SALCO PRODUCTS, INC.</b>		
PART NAME: <b>QUICK CONNECT CAP 4" THREADED</b>		
MATERIAL: <b>416 SS</b>		
PROJECT #: <b>090219</b>	SHEET #: <b>1 OF 1</b>	SCALE: <b>3:4</b>
DRAWING #: <b>C26633</b>	PART #: <b>TE4S416DC2A</b>	